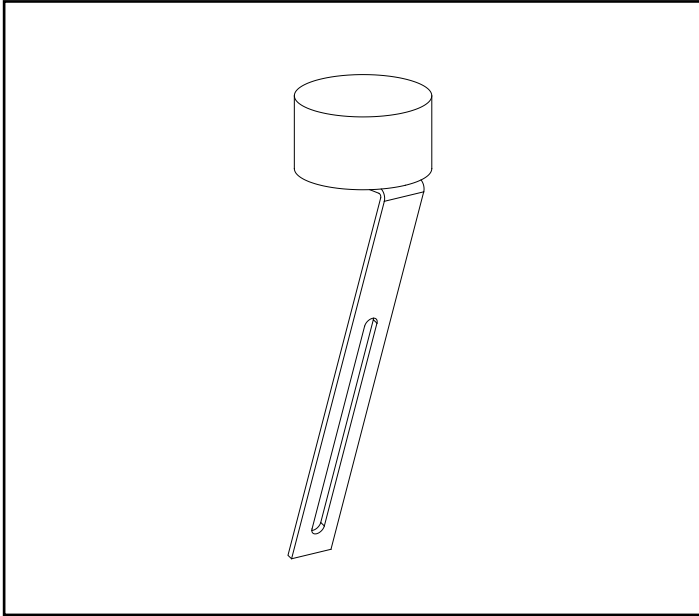


**COUNTERWEIGHT
KIT
for Air Actuated
Baffle**

Instruction Manual



COUNTERWEIGHT KIT for Air Actuated Baffle

Models: BCW-4P



BCW-4P Manual for use and Maintenance

Thank You:

Thank you for purchasing a Munters Counterweight Kit. Munters equipment is designed to be the highest performing, highest quality equipment you can buy. With the proper installation and maintenance it will provide many years of service.

Please Note:

To achieve maximum performance and insure long life from your Munters product it is essential that it be installed and maintained properly. Please read all instructions carefully before beginning installation.

Warranty:

For Warranty claims information see the "Warranty Claims and Return Policy" form QM1021 available from the Munters Corporation office at 1-800-227-2376 or by e-mail at aghort.info@munters.com.

Conditions and Limitations:

- Products and Systems involved in a warranty claim under the "Warranty Claims and Return Policy" shall have been properly installed, maintained and operated under competent supervision, according to the instructions provided by Munters Corporation.
- Malfunction or failure resulting from misuse, abuse, negligence, alteration, accident or lack of proper installation or maintenance shall not be considered a defect under the Warranty.

Index

Chapters	Page
1. Unpacking the Equipment	4
1.1 Parts List	4
1.2 Part Dimensions	4
2. Installation Instructions	5
2.1 Installation for CI0896-R and CI1296-R	5
2.2 Installation for adapting 890P and 1290P	8
3. Adjustment	9

Unpacking the Equipment 1.

1.1 Parts List

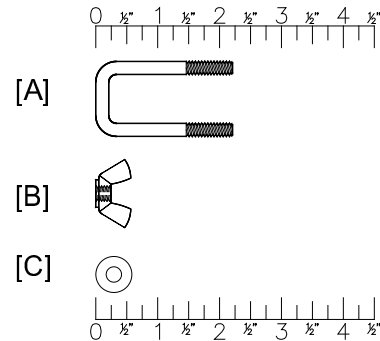
Before beginning installation, check the overall condition of the equipment. Remove packing materials, and examine all components for signs of shipping damage. Any shipping damage is the customer's responsibility and should be reported immediately to your freight carrier.

Each BCW-4P includes:

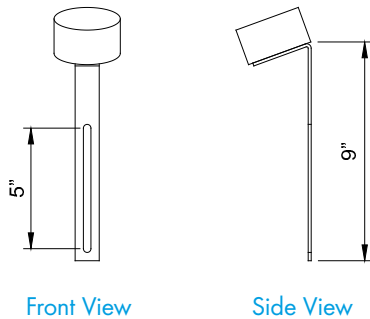
- 1 - AC1512 Counterweight
- 1 - Hardware Package (HP1033)

HP1033 for BCW-4P

ID	Qty.	Cat. No.	Description
[A]	1	KX2802	1/4"-20 x2" U-Bolt, SS
[B]	2	KN2301	1/4"-20 Wing Nuts, NY
[C]	2	KW3002	1/4" Washers, SS



1.2 Part Dimensions



COUNTERWEIGHT, AC1512

Note:

The Counterweight Kit is designed to adapt plastic Aero-Baffle for air actuated operation. Use two kits for each 8' section of baffle.

Installation Instructions

2.

2.1 Installation for CI0896-R and CI1296-R

If installing for CI0896-R or CI1296-R Aero-Baffle, proceed to [Step 1](#).

If adapting counterweight to existing 890P and 1290P, proceed to [Steps 13-17](#).

Step 1

Construct a framed opening as shown in [Figures 1A and 1B](#). Each open end of the baffle needs a framed end gusset. [See Figure 1C](#).

Step 2

Position and secure in place a length of ¼-Round trim board for baffle stop. [See Figure 1A](#).

FRAMING DIMENSIONS

Cat. No.	Baffle Size	Baffle Cat. No.	A	B
BCW-4P	8"	CI0896-R	9"	Baffle Length + ½"
BCW-4P	12"	CI1296-R	12"	Baffle Length + ½"

Table 1

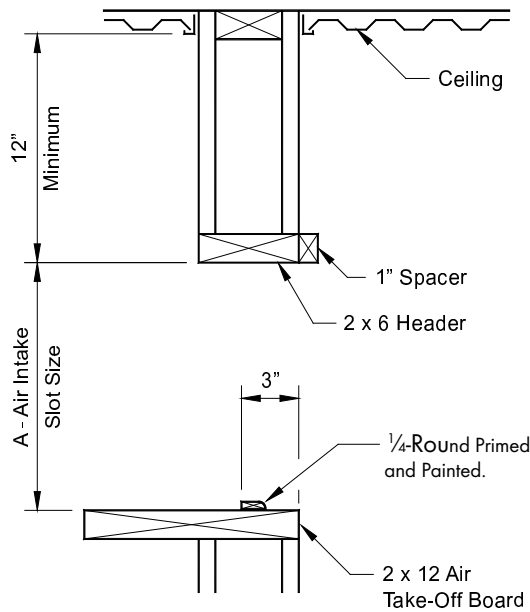


Figure 1A
CROSS SECTION

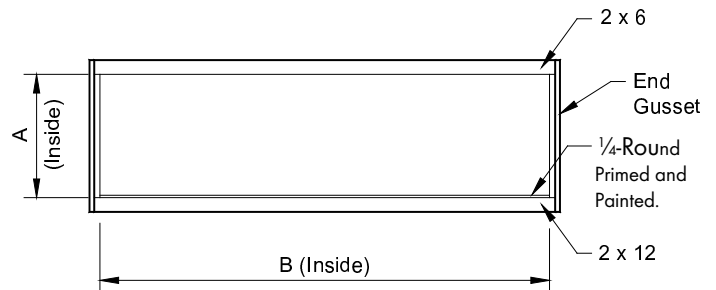
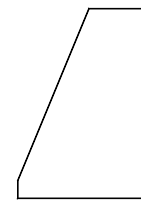


Figure 1B
FRONT VIEW



End Gusset

Figure 1C
SIDE VIEW

Step 3

Prime and paint all exposed wood surfaces.

Step 4

Drill (2) $\frac{3}{32}$ " holes, centered on length of door for a 4' door or 2' from each end for an 8' door. The first hole should be located $\frac{1}{2}$ " down from top of baffle and second hole should be $1\frac{1}{2}$ " from top of baffle. See Figure 2.

Step 5

Attach baffle to framed opening using aluminum or galvanized roofing nails or screws (do not overtighten). Mount top edge of hinge $\frac{5}{8}$ " up on top header and centered on framed opening length. See Figure 3A, 3B & 3C. Baffle may need to be trimmed to maintain end clearance specified in Figure 3C.

Step 6

Insert U-Bolt [A], from exhaust side of baffle through holes. Position counterweight slot over U-Bolt legs. Make sure weight is positioned as shown in Figure 3A & 3B. Recommended starting position for counterweight is $3\frac{1}{2}$ " from top of door.

Step 7

Install one Washer [C] on top leg and two Washers [C] on bottom leg of U-Bolt. Fasten in place with (2) Wing Nuts [B].

Step 8

Loosen Wing Nuts [B] to slide the counterweight up or down to desired operating position.

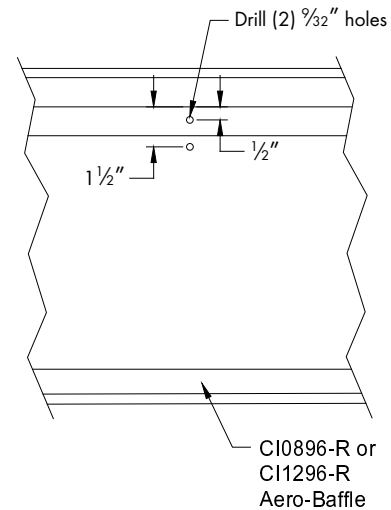


Figure 2

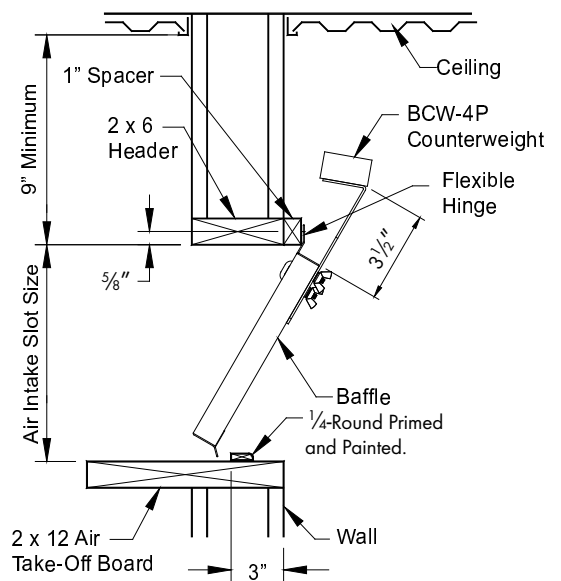


Figure 3B
CROSS SECTION

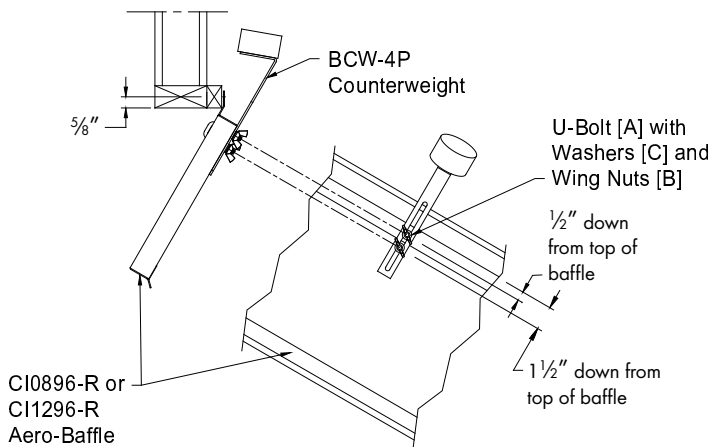


Figure 3A

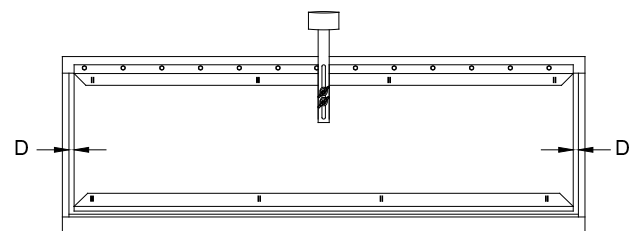


Figure 3C

END CLEARANCE

Temperature	D
ABOVE 60°F	$\frac{1}{16}$ "
AT OR BELOW 60°F	$\frac{1}{8}$ "

Step 9

Gently push baffle open by hand, checking for smooth operation. Trim baffle ends if rubbing occurs. Baffle installation is now complete.

Step 10

For bringing air out of attic.
See Figure 4.

Step 11

In this application, counterweights must be offset so as not to touch each other when baffle opens.

Step 12

For support of air take off board.
See Figure 5.

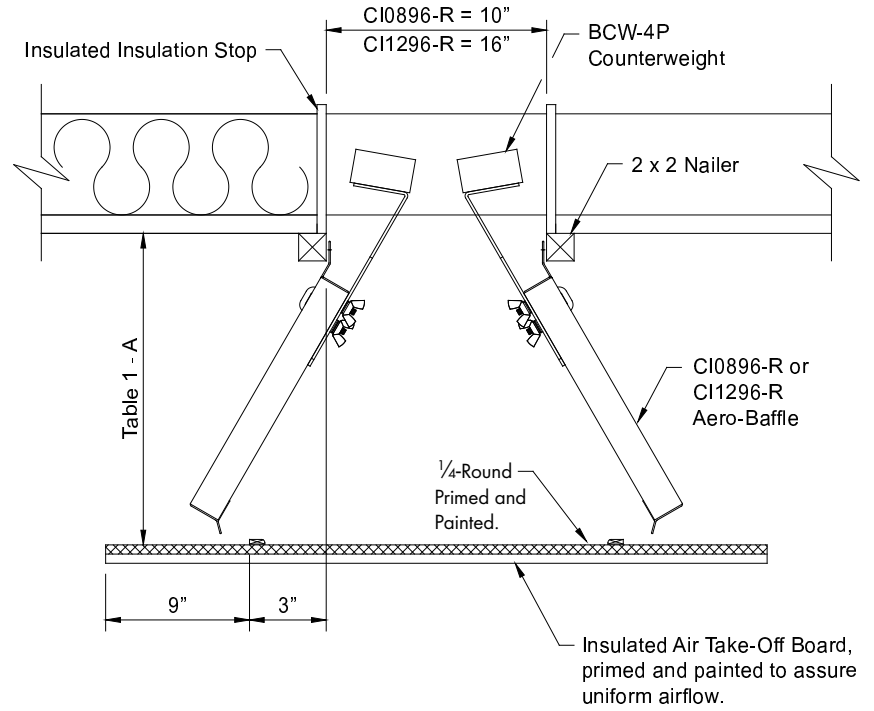


Figure 4

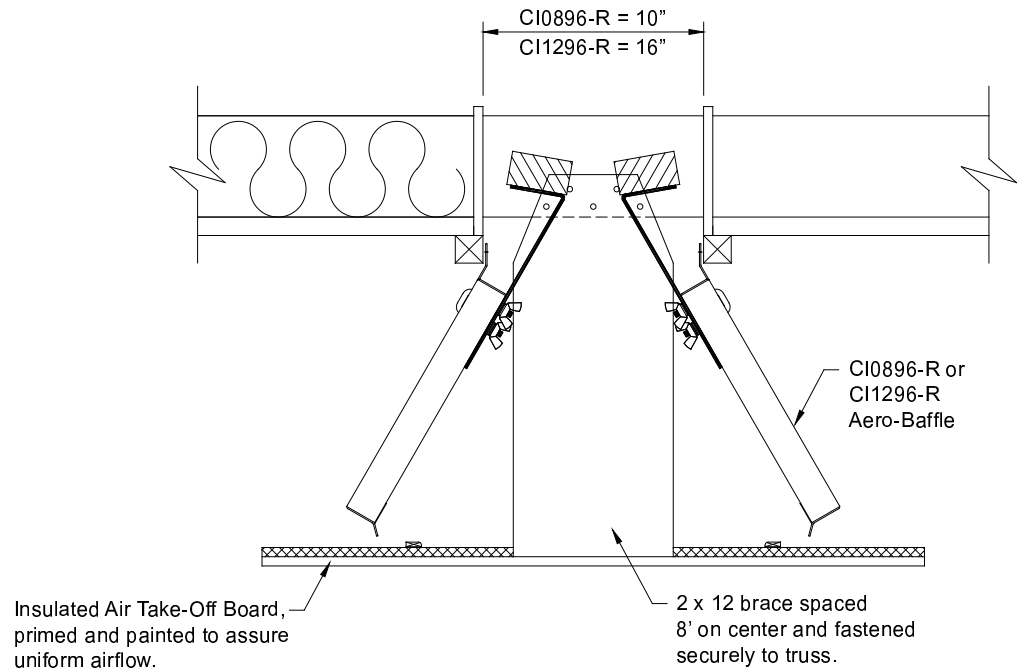


Figure 5

2.2 Installation for adapting 890P and 1290P

Step 13

Remove existing counterweight and mounting bracket from baffle. See Figure 6.

Step 14

Drill (2) $\frac{3}{32}$ " holes, centered on length of door. The first hole should be located $\frac{1}{2}$ " down from top of baffle and second hole should be $1\frac{1}{2}$ " from top of baffle. See Figure 7A.

Step 15

Insert U-Bolt [A], from exhaust side of baffle, through holes. Position counterweight slot over U-Bolt legs. Make sure weight is positioned as shown. See Figure 7B.

Step 16

Install one Washer [C] on top leg and two Washers [C] on bottom leg of U-Bolt, fasten in place with (2) Wing Nuts [B]. See Figure 7B.

Step 17

Loosen Wing Nuts to slide counterweight up or down to desired operating position

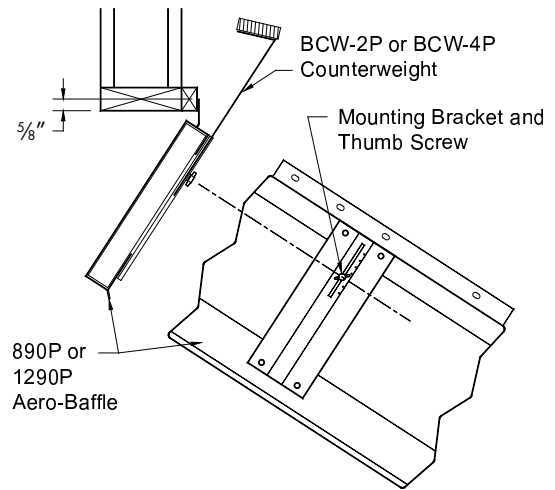


Figure 6
OLD BAFFLE, OLD WEIGHT

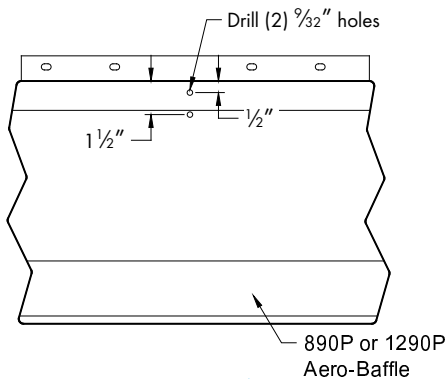


Figure 7A
OLD BAFFLE, NEW WEIGHT

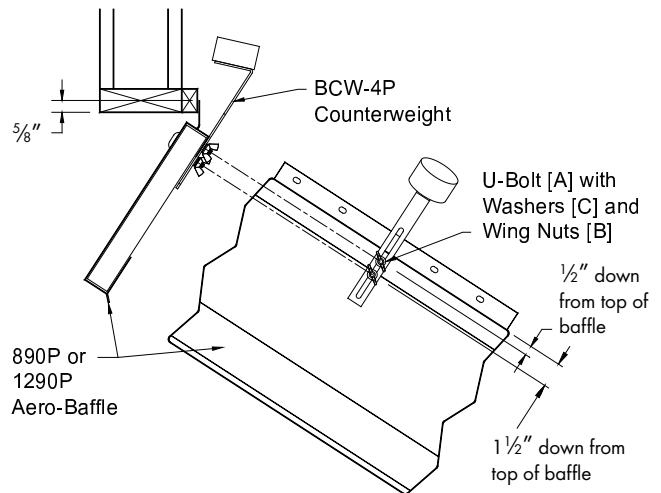


Figure 7B
OLD BAFFLE, NEW WEIGHT

Adjustment

3.

Step 1

To achieve a higher static pressure in room, lower counterweight slightly.

Step 2

To achieve a lower static pressure in room, raise counterweight slightly.

REPLACEMENT PARTS

Kit No.	Counterweight	Hardware
BCW-4P	AC1512	HP1033

Counterweight Kits are developed and produced by Munters Corporation, Lansing, Michigan U.S.A. 1-800-227-2376



Munters Europe AB, Isafjordsgatan 1, P.O. Box 1150, SE-164 26 Kista, Sweden. Phone +46 08 626 63 00, Fax +46 8 754 56 66.

Munters Corporation 2691 Ena Drive Lansing, MI 48917 U.S.A. Phone +1 800-227-2376, Fax +1 517-676-7078

www.munters.us

Australia Munters Pty Limited, Phone +61 2 6025 6422, **Brazil** Munters Brasil Industria e Comercio Ltda, Phone +55 41 3317 5050, **Canada/US** Munters Corporation Lansing, MI Phone +1 517 676 7070, **China** Munters Air Treatment Equipment (Beijing) Co. Ltd, Phone +86 10 80 481 121, **Denmark** Munters A/S, Phone +45 9862 3311, **India** Munters India, Phone +91 20 3052 2520, **Indonesia** Munters, Phone +62 818 739 235, **Italy** Munters Italy S.p.A., Chiusavecchia, Phone +39 0183 52 11, **Japan** Munters K.K., Phone +81 3 5970 0021, **Korea** Munters Korea Co. Ltd., Phone +82 2 761 8701, **Mexico** Munters Mexico, Phone +52 818 262 54 00, **Russia** Munters AB, Phone +7 812 448 5740, **Singapore** Munters Pte Ltd., Phone +65 744 6828, **South Africa and Sub-Sahara Countries** Munters (Pty) Ltd., Phone +27 11 997 2000, **Spain** Munters Spain S.A., Phone +34 91 640 09 02, **Sweden** Munters AB, Phone +46 8 626 63 00, **Thailand** Munters Co. Ltd., Phone +66 2 642 2670, **Turkey** Munters Form Endüstri Sistemleri A.Ş, Phone +90 322 231 1338, **USA** Munters Corporation Lansing, MI Phone +1 517 676 7070, **Vietnam** Munters Vietnam, Phone +84 8 3825 6838, **Export & Other countries** Munters Italy S.p.A., Chiusavecchia Phone +39 0183 52 11