



# Munters LTX Housing

## Light Trap Extension Housing for VORTEX

Munters LTX Housing light trap extension box minimizes light entering poultry buildings with Vortex 36", 51" and 55" exhaust fans.

### Features

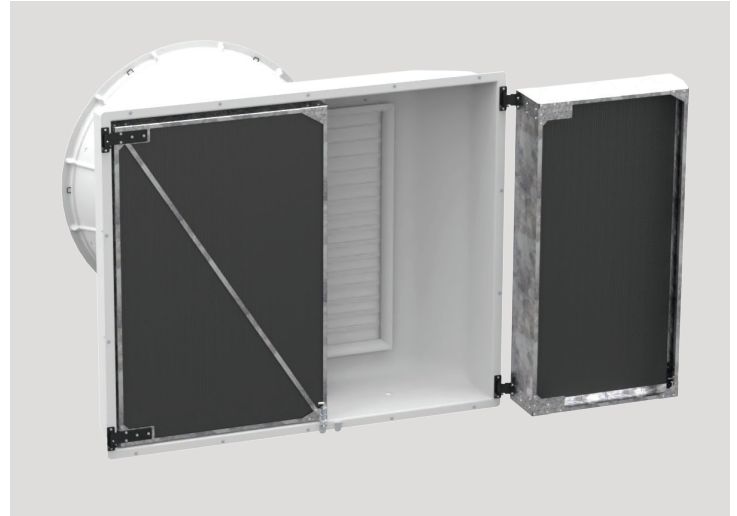
- Sloped fiberglass housing effectively sheds water, keeping your equipment safe and dry
- Easy to move swing doors and removable filters provide easy access for cleaning and fan maintenance, making upkeep simple for a single worker
- Exceptional light control with 11" Full-Dark and 5.5" Half-Dark light filters
- The asymmetrical doors are designed to open easily, ensuring convenient maintenance access to the shutter and fan and with a 3' door even tight spaces are not a problem
- Constructed from corrosion-resistant materials, ensuring long-lasting durability
- Flush mount to the inside wall and a standard rough opening size, installation is easy and hassle-free

Introducing the Munters LTX Housing - the ultimate solution for poultry farmers who require precise control over the amount of light entering their buildings.

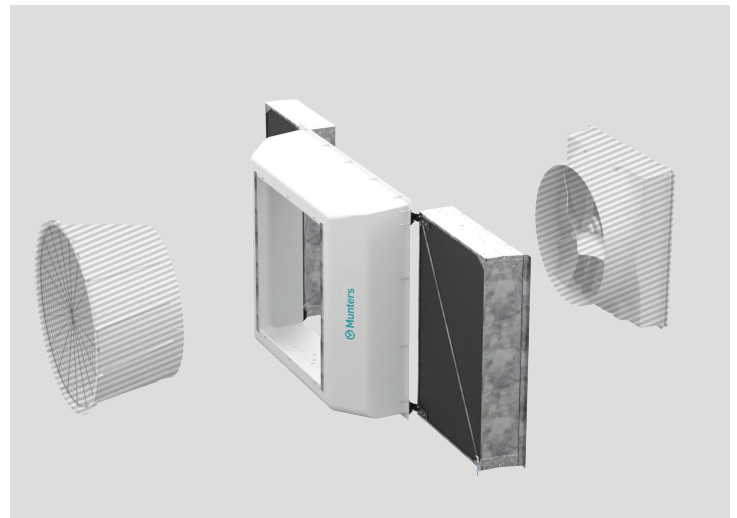
Specifically designed for Munters Vortex 36, 51 and 55. The design will allow one wall opening for all models, while maximizing airflow with light control. Resulting in less mislaid eggs and improved overall building productivity.

With an easy to move, asymmetrical 4-foot and 3-foot door design, the LTX Housing is incredibly easy to maintain, providing convenient access for cleaning and fan maintenance. The light trap can be effortlessly moved out of the way without any tools needed.

Experience the ultimate in light filtration with premium light filters featuring 11" Full-Dark and 5.5" Half-Dark filters, delivering exceptional light control for poultry farmers. Upgrade to the Munters LTX Housing to maximize your nest performance and revolutionize your poultry farming operation.



LTX Housing - Easy to move swing-doors and removable filters



LTX Housing (fan not included)

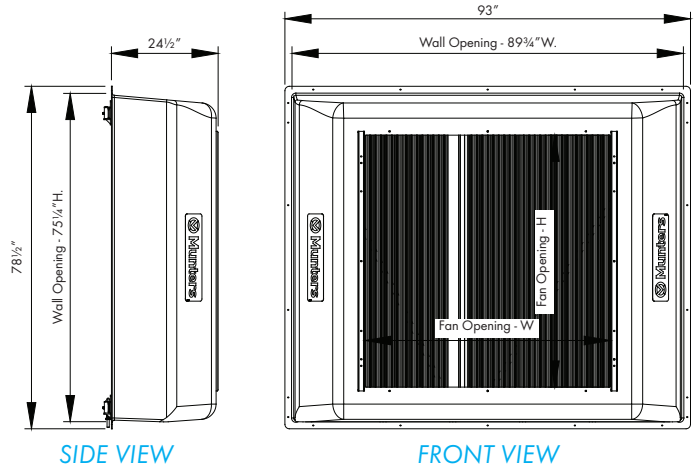
# Munters LTX Housing

## Light Trap Extension Housing for VORTEX

### Dimensions

	Rough Opening W x H (Inches)
LTX Housing	89 ¾ x 75 ¼ (+1/2"/-0")

Catalog	For Fan	Fan Opening
36LTX	VX36	43"W x 43"H
51LTX	VX51	56½"W x 57¾"H
55LTX	VX55	60"W x 61¼"H



### Technical specifications

Light Trap Light Reduction Ratio: >1,900,000:1*	
Pressure Drop Rating	
300 FPM	0.022 inches wg
400 FPM	0.035 inches wg
500 FPM	0.055 inches wg
600 FPM	0.073 inches wg
700 FPM	0.090 inches wg
800 FPM	0.115 inches wg

Exceeds University of Georgia standards for blackout applications  
Does not account for housing

Find your nearest Munters office at [www.munters.com](http://www.munters.com)

Munters reserves the right to make alterations to specifications, quantities, etc., for production or other reasons, subsequent to publication. © Munters AB, 2023