



Munters Saturn 60

Exhaust Fans

Munters Saturn 60 brings size and efficiency to meet the demands of larger poultry buildings.

Motor

- Premium High Efficiency belt drive motor, standard
- Designed for use with the new Munters Drive G2 motor
- Same high quality and extremely durable cast aluminum drive assembly and sealed bearing from the WM36 & WM54
- Corrosion resistant internal components including powder coated struts and brackets, composite housing and doors along with stainless steel fasteners
- Best performance in its class 35,400 cfm and 20.3 cfm/watt @0.1" H₂O

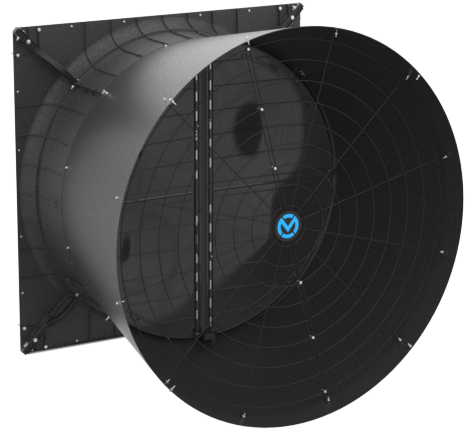
Housing and Doors

- Reinforced durable state of the art composite housing built for rigidity, easy assembly and maximum airflow
- Aerodynamically designed doors made to open fully for maximum airflow, even under high static pressure. The doors close tight to block out light when not in operation
- Inside mounting is flush, no guards sticking into the building, getting in the way of machinery
- Guard includes easy to use guard clips for easy on off during maintenance and built in wind cable

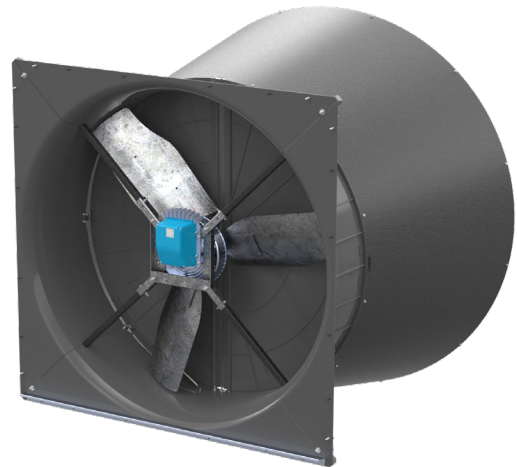
As the demands for larger more efficient buildings continues to evolve, the equipment needs to evolve as well. Munters WM Series fans have been the market leader in reliability for the last ten years so, using more aero-design and high-tech polymers to push the size to 60 inches Munters engineers took the WM Series to the next level. This allows for fewer fans per building. The Saturn 60 performance becomes the market leader in both performance and efficiency.

We used expanded polyethylene to build an extremely durable, ridged, light weight fan. The material also resists light penetration and has very low expansion and contraction properties. The housing has an integrated damper ring, as well.

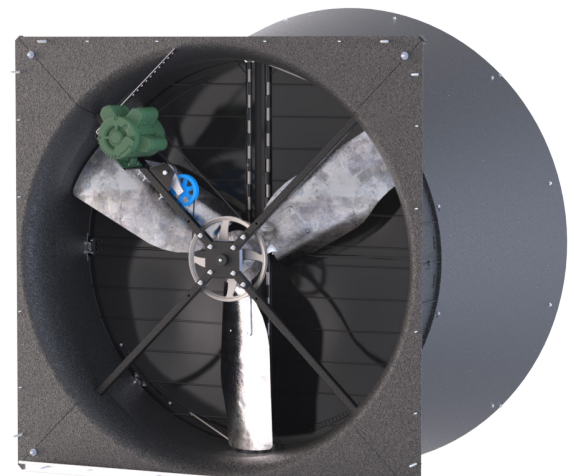
Munters has engineered the ideal balance of size and efficiency with Saturn 60.



Saturn 60



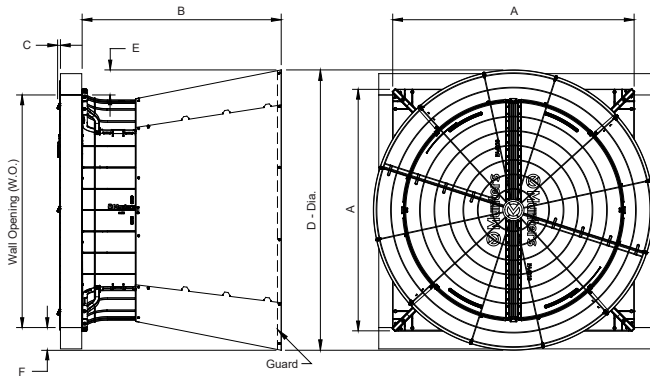
Saturn 60 Munters Drive



Saturn 60 Belt Drive

Munters Saturn 60

Dimensions



| Size | A | B | C* | D - Dia. | E (Above W.O.) | F (Below W.O.) | Wall Openings (W.O.) |
|------|--|--------------------|-----------------|----------------------|--------------------|-------------------|-------------------------|
| 60" | 68 $\frac{1}{8}$ "W. x 68 $\frac{1}{8}$ " H. | 58 $\frac{1}{8}$ " | $\frac{7}{8}$ " | 79 $\frac{15}{16}$ " | 7 $\frac{1}{16}$ " | 6 $\frac{3}{8}$ " | 65"W. x 65"H. |

*Dimension varies depending on wall construction and motor configuration

Performance

Belt Drive Performance

| Static Pressure | High Efficiency SAT6015P1CB-E | | High Performance SAT6015P1CB-P | |
|-----------------|----------------------------------|----------|-----------------------------------|----------|
| | CFM | CFM/WATT | CFM | CFM/WATT |
| 0.00" | 37,700 | 27.6 | 39,500 | 25.3 |
| 0.05" | 35,800 | 24.7 | 37,700 | 22.8 |
| 0.10" | 33,500 | 21.8 | 35,400 | 20.3 |
| 0.15" | 30,300 | 18.5 | 32,700 | 17.6 |
| 0.20" | 27,500 | 16.1 | 29,700 | 15.4 |
| RPM | 506 | | 529 | |
| Airflow Ratio | 0.77 | | 0.79 | |
| BESS Test # | 24635 | | 24634 | |

Find your nearest Munters office at www.munters.com

Munters reserves the right to make alterations to specifications, quantities, etc., for production or other reasons, subsequent to publication. © Munters AB, 2025