



Munters EDT 30 HE and EMT 30

Air circulation fans

EDT 30 HE and EMT 30 are among the most long-standing air circulators designed and produced by Munters, able to provide a uniform and efficient airflow in any poultry (broiler, layer) and greenhouse application.

Features

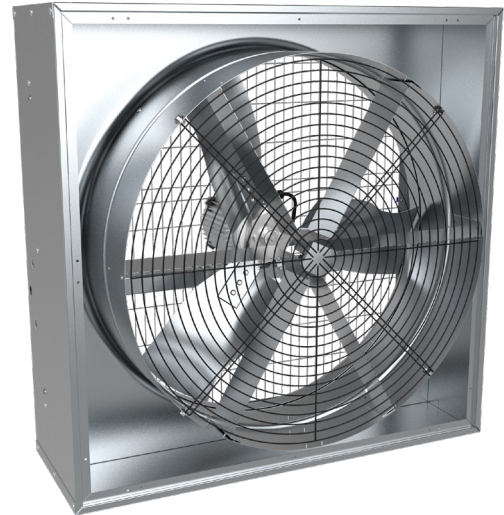
- Superior durability with Munters Protect coating, 3 years warranty against corrosion
- Easy installation
- High airflow capacity
- Energy efficient solution
- EDT 30 HE features high efficiency motor, in according to EU regulation

Munters EDT 30 HE and EMT 30 are developed to break up stratified heat, humidity and stagnant air, optimizing temperature and improving indoor air quality. They feature the housing and propeller made in Munters Protect coated steel for extra strength and resistance against corrosion.

The belt drive system of EMT 30 enables low speed propeller, which results in reduced energy consumption and noise level. On the other hand, EDT 30 HE is characterized by direct drive motor that ensures high airflow capacity, while making maintenance easier.

Munters EDT HE and EMT air circulators feature some special threaded bushes on their side panels that allow the farmer to easily hang the fans on the wall.

As market leader in ventilation solutions for more than 60 years, Munters guarantees quality and is ISO 9001 certified.



EDT30HE front view

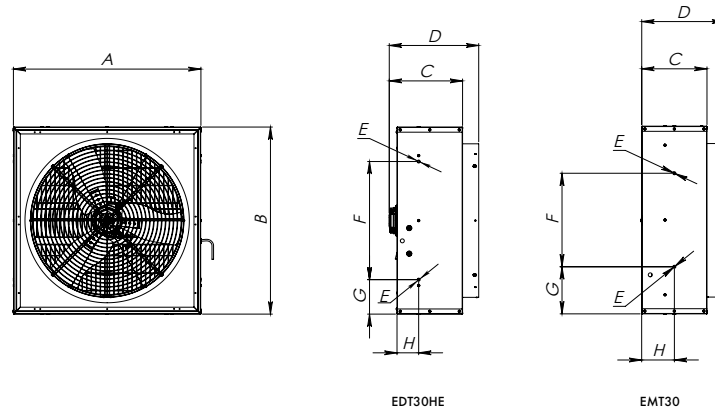


EMT30 rear view

Munters EDT 30 HE and EMT 30

Air circulation fans

Dimensions

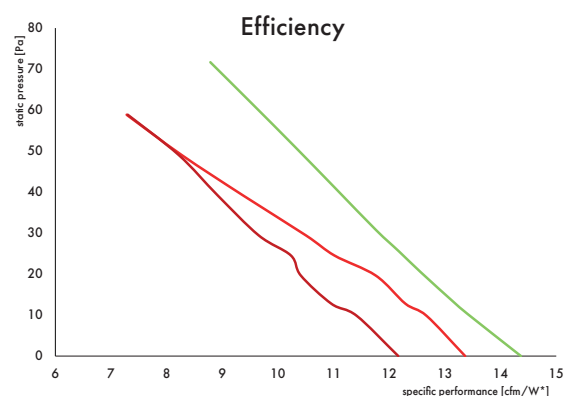
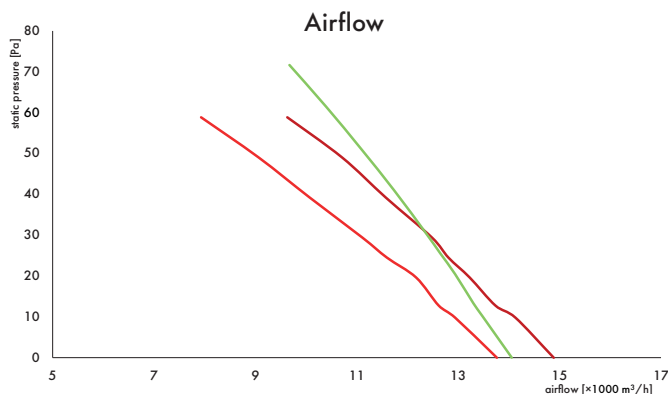


	A	B	C	D	E	F	G	H
EDT30HE	950 mm	950 mm	375 mm	455 mm	M8	600 mm	175 mm	110 mm
EMT30	950 mm	950 mm	331 mm	420 mm	M8	475 mm	239 mm	166 mm

Technical specifications

		EDT30HE	EMT30
Nominal power	Hp	0.5	0.5 0.75
Propeller diameter	mm [inch]	770 [30]	770 [30]
Number of blades/material		3/Munters Protect	6/Munters Protect
Transmission		Direct	Belt drive
Weight of fully equipped fan	kg	41	42 44
Max power consumption/max current ¹	W/A	720/1.3	620/1.3 870/1.6
Max operating temperature	°C [°F]	50 [122]	50 [122]
Max operating pressure	Pa	50	50
Motor insulation grade/protective class		F/IP55	F/IP55
Noise level ²	Db(a)	69.7	63.2 66.7

¹50 Hz specification, 60 Hz available upon request, ²Noise measure made according to ISO 3744



— EDT30HE, — EMT30 Hp 0.75, — EMT30 Hp 0.5

Airflow and efficiency data measured at standard conditions (20°; 1013 hPa). *1 cfm/W = 1.7 m³/hW

Load capacity

	EDT30HE Assembled	EMT30 Assembled
20' Container	60	36
40' Container	120	72
40' HC Container	120	72
Truck	140	84

Find your nearest Munters office at www.munters.com

Munters reserves the right to make alterations to specifications, quantities, etc., for production or other reasons, subsequent to publication. © Munters AB, 2021