



Munters Plastic Gutter

Evaporative Cooling

Munters Plastic Gutter (MPG) is a complete water supply and distribution system for wet evaporative cooling pad walls. An easy-to-install, glue- and adhesive free solution system.

Glue-free system

- no water leakage from adhesive cracks
- easy installation, cleaning, and pad replacement
- avoid reworks and repairs of full length cooling system

High quality materials

- no water leakage from thermal expansion and contraction
- robust double-wall tank
- excellent durability
- long service life

The biggest risk factor in standard water distribution systems is the glue application, which can lead to water leakage and complicated repairs if something goes wrong. Glue is also prone to tearing and ripping with time and due to the thermal expansion and contraction of the gutter system.

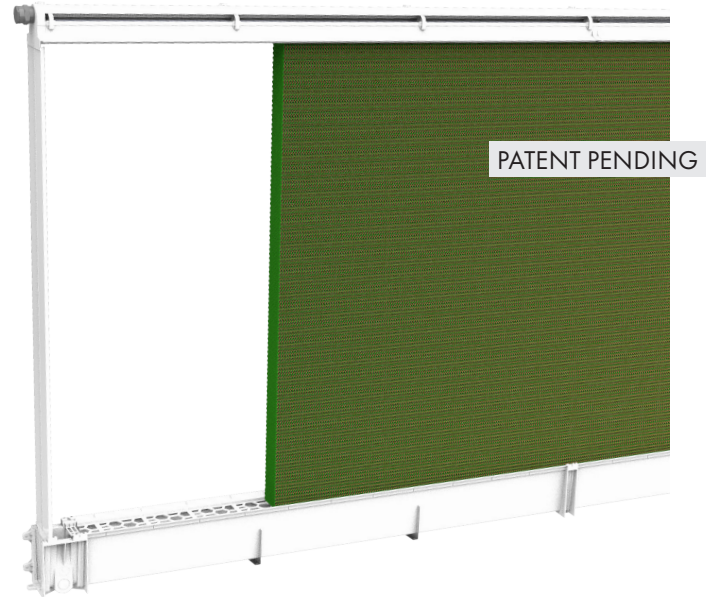
Munters Plastic Gutter (MPG) replaces the glue with innovative joints to avoid leakage from the thermal effects.

Installation, inspection, and ordinary maintenance are all drastically reduced as the MPG modular system can be easily disassembled and doesn't require drying time.

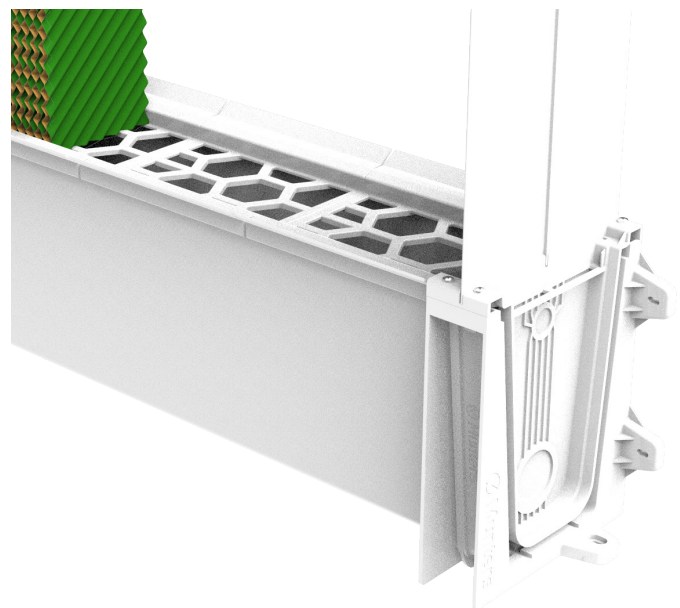
The double-wall tank supplies the water needed for the full system, saving time and money as it does not require an extra tank.

The gutter is available in two depths - 100 and 150 mm – to better meet farmers' needs, based on house dimensions, type of farm, and livestock density.

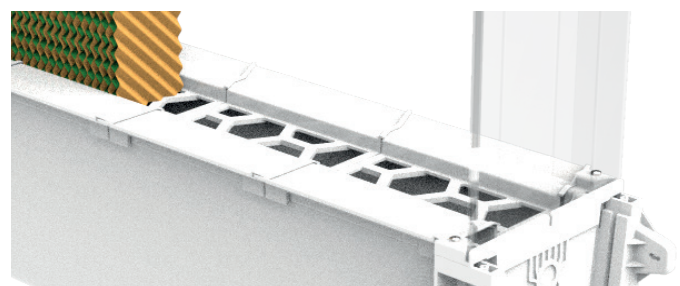
MPG is the ultimate solution for climate zones where cooling is required (-10/+40°C – 15/105°F) and for all livestock and greenhouse applications.



Munters Plastic Gutter



Munters Plastic Gutter - 150 (above)-100 (below) mm honeycomb pad support



Munters Plastic Gutter

Evaporative Cooling

All-in-One solution

Munters Plastic Gutter has been engineered and designed to ensure proper wetting of the cooling pad, even in extremely hot weather requiring continuous water recirculation

Used with CELdek® pads, the MPG solution ensures perfect temperatures for farms and greenhouses in every climate.

All parts are made in high quality PVC and PP materials, UV stabilized.

The complete MPG solution includes:

- Full frame system (top, bottom and lateral sides)
- Water distribution kit and centrifugal water pump, accessory
- Inspection kit, accessory
- Flushing kit, accessory
- Pump support bracket kit, accessory
- Spare parts kit, accessory

Pad guides and deflectors

Clip-in function for easy mounting experience. Deflector design ensures best water distribution without the need for a distributor pad.

Elements

● Base Element 6 m, contains:

- Supply and discharge bracket (middle or side water feed)
- Two sections: 3 m and 2.85 m long
- Lateral sides (pads height up to 2.5 m)

● Middle Element 6 m, contains:

- Two 3 m long sections

● Middle Element 3 m long

- One 3 m long section

● Base Element 3 m (single element, swine applications), contains:

- Supply and discharge bracket (middle or side water feed)
- One 3 m long section
- Lateral sides (pads height up to 2.5 m)

Munters Plastic Gutter is configurable with CELdek® 100 mm (4 inch) and 150 mm (6 inch) or RCP* CoolPad 150 mm (6 inch) for installation up to 2 m (6.5 ft) and 2.5 m (8 ft) height, respectively.

Gaskets

Glue-free system, made in neoprene.

Pad support

Designed with large honeycomb openings to avoid water stagnation, clogging and algae proliferation, easy to clean and flush.

CELdek®

To achieve optimal results, we recommend the use of Munters CELdek® pads, GreenGuard Gold certified (wash rate 60[l/min]/m²), and available in two depths - 100 and 150 mm.

Designed to provide maximum cooling effect, with low pressure drop and years of reliable service, it is made from specifically engineered cellulose paper. CELdek® crossed, unequal angle pad design promotes the beneficial mixing of air and water for optimal cooling.

RCP CoolPad

MPG is configurable to also work with plastic RCP CoolPad (wash rate 120[l/min]/m²), depth 150 mm.

Water gutter

Water tank incorporated in bottom part, with high water capacity to avoid dry operation of the pump. Stable and robust double wall to avoid wobbling.

Available accessories

1

Distribution Kit

Includes all piping, joints, elbows, necessary to connect water pump to MPG system, float valve, for middle or side water feed.

2

Water Pump

Centrifugal water pump with integrated filter. Available configurations include: 230/400VAC, single or three phases, 50/60Hz.

3

Inspection Kit

Allows inspection and adjustment of the float valve (without pads removal).

4

Flushing Kit

Allows flushing out of concentrated water, dirt and debris from the system.

5

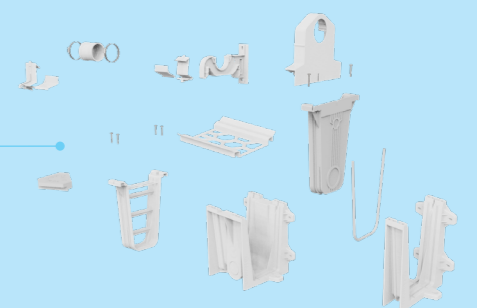
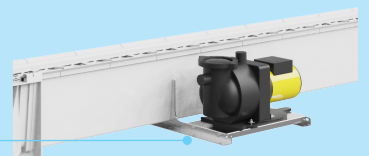
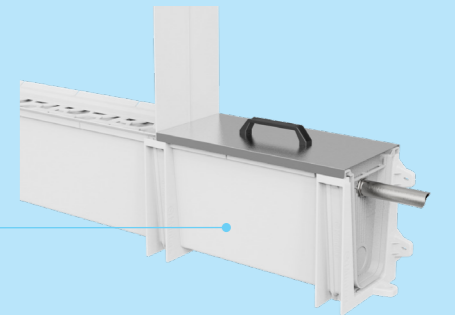
Pump Support Bracket Kit

Allows pump fixing in hanging position (suspended) when floor installation is not possible.

6

Spare Parts Kit

Replacement parts in the unlikely event of breakage or damage during installation.



Munters Plastic Gutter

Evaporative Cooling

Pump	Length	Water Feed Middle(M)/Side(S)	MPG Elements with CELdek® 100-150						
0.5 hp	3	M/S*	●						
	6	M/S*	●						
	9	M/S*	●	●					
	12	M/S*	●	●	●				
1.0 hp	15	M/S*	●	●	●	●			
	18	M/S*	●	●	●	●	●		
	21	M/S*	●	●	●	●	●	●	
	24	M/S*	●	●	●	●	●	●	●
	27	M	●	●	●	●	●	●	●
	30	M	●	●	●	●	●	●	●
2.0 hp	33	M	●	●	●	●	●	●	●
	36	M	●	●	●	●	●	●	●
	39	M	●	●	●	●	●	●	●
	42	M	●	●	●	●	●	●	●

Pump	Length	Water Feed Middle(M)/Side(S)	MPG Elements with RCP CoolPad 150			
1.0 hp	3	M/S*	●			
	6	M/S*	●			
	9	M/S*	●	●		
	12	M/S*	●	●	●	
2.0 hp	15	M	●	●	●	
	18	M	●	●	●	●
	21	M	●	●	●	●
	24	M	●	●	●	●

*in case of side water feed, BE elements is in first position

● Base Element 6 m long | ● Middle Element 6 m long | ● Middle Element 3 m long | ● Base Element 3 m long (single element)

Wash rates: 60 l/min per m² top surface for CELdek® pad (depth 100 and 150 mm) | 120 l/min per m² top surface for RCP plastic pad (depth 150 mm)

Pumping system: 0.5 hp pump size/single-phase 220V/50-60Hz | 1.0 hp pump size/three-phase 400V/50-60Hz | 2.0 hp pump size/three-phase 400V/50-60Hz

Max weight per unit length = 85 kg/m (+ 25% of the structural robustness for suspended installations)

Load capacity

	MPG elements	Accessories
20' Container	192 m (2 towers, 32 boxes)	30 pcs DK and 48 pcs pumps
40' Container	576 m (6 towers, 96 boxes)	15 pcs DK and 24 pcs pumps
40' HC Container	720 m (6 towers, 120 boxes)	18 pcs DK and 28 pcs pumps

Find your nearest Munters office at www.munters.com

Munters reserves the right to make alterations to specifications, quantities, etc., for production or other reasons, subsequent to publication. © Munters AB, 2023