

Munters LFd

Light filters

Light control plays an important role in modern poultry management. With an optimally controlled light program, aside from the onset of egg production, factors such as body weight development, self-weight, and feed intake can be positively influenced in layer houses. Only in this manner, excellent production targets can be achieved.

Advantages

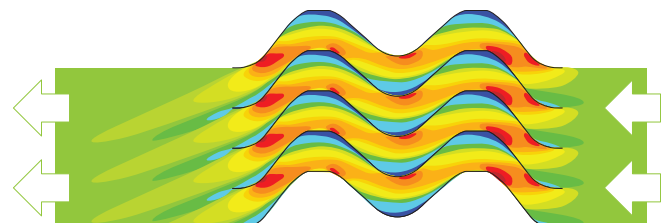
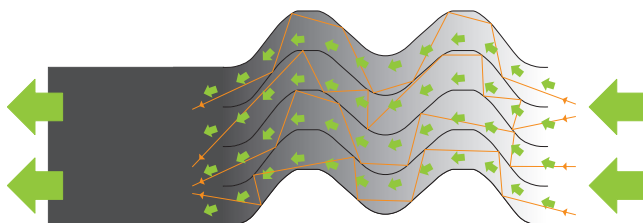
- 100% light reduction
- High-pressure cleaning
- Low transport volume
- Fast and easy assembly
- Galvanised metal frame
- UV-stabilized lamella



The first step in controlling light in a poultry farm is a light-tight building. However, in practical use, limiting and regulating the entry of light can conflict with the ventilation needs, as daylight can enter through both air inlets and exhaust fans openings. This problem can be solved with light filters. LFd allows continuous airflow into the building while preventing light from entering. The specially shaped lamellas reflect the light several times. Each reflection absorbs some of the light, resulting in a reduction in intensity.

LFd double shaft prevents light penetration by practically 100% (>99.9999%).

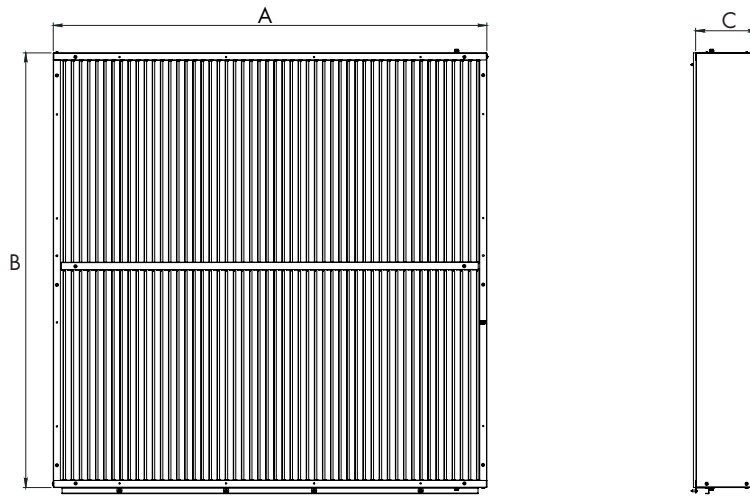
LFd functioning principle



Munters LFd

Light filters

Dimensions

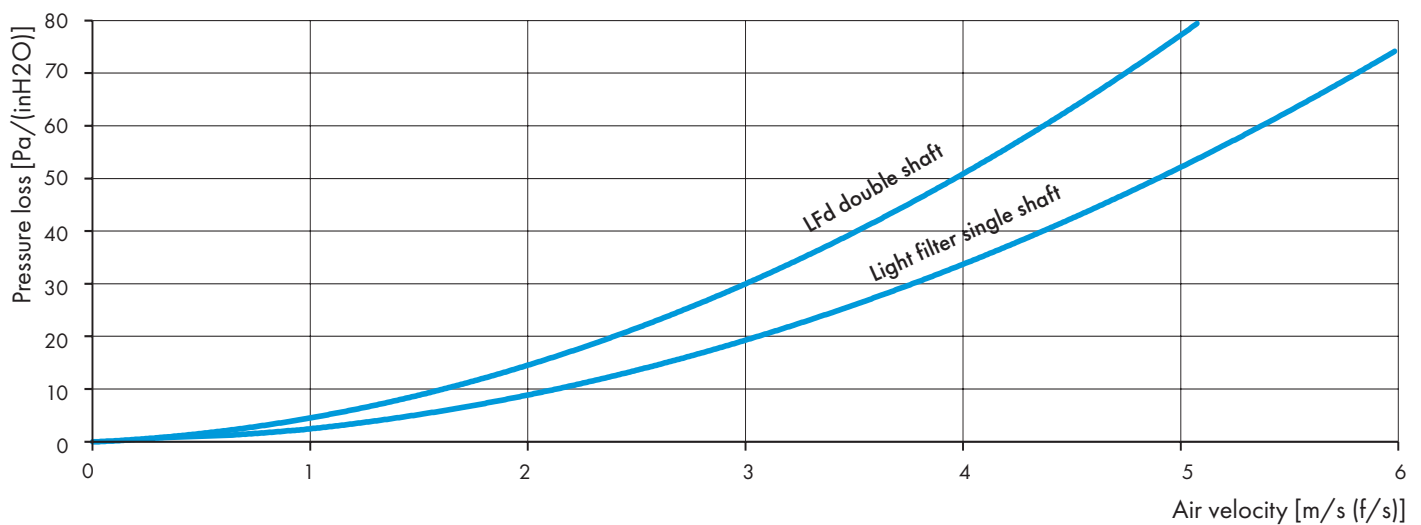


	A	B	C
LFd24	745 mm	745 mm	233 mm
LFd30	958 mm	951 mm	233 mm
LFd36	1,080 mm	1,085 mm	233 mm
LFd50	1,383 mm	1,380 mm	233 mm
LFd52	1,440 mm	1,430 mm	233 mm
LFd54	1,474 mm	1,481 mm	233 mm
LFd55	1,626 mm	1,630 mm	233 mm

Technical specifications

LFd (double shaft)	
Light reduction factor	2.000.000 : 1 (160,000 to 0.12 lux)
Lamella material	UV-resistant PP
Frame material	Munters Protect

Pressure loss



Find your nearest Munters office at www.munters.com

Munters reserves the right to make alterations to specifications, quantities, etc., for production or other reasons, subsequent to publication. © Munters AB, 2023