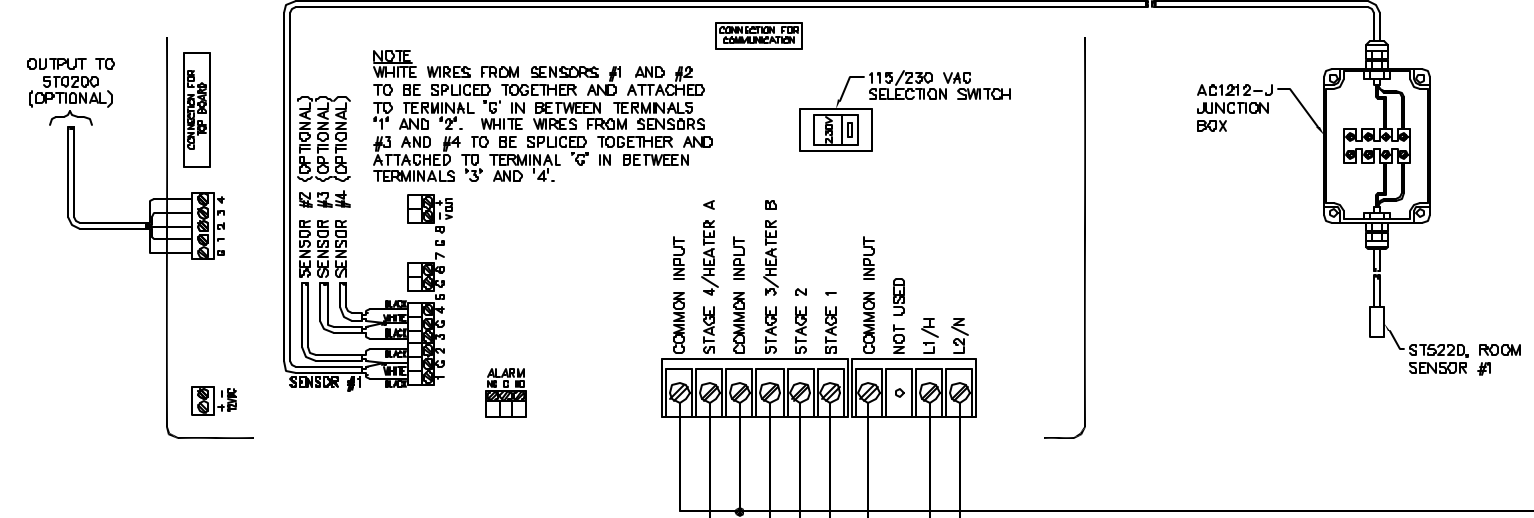
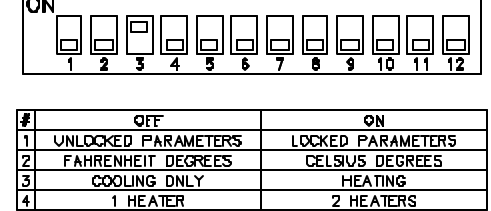


ST5220

NOTES

1. AN EXTERNAL RELAY WITH A MANUAL OVERRIDE SWITCH, SUCH AS THE STAGE HAND REFERRED TO IN THIS DIAGRAM, ARE REQUIRED FOR ALL FANS RANGING FROM 36" DIA. TO 60" DIA. OVERRIDE SWITCHES ALONE MAY BE USED ON 9" DIA. FANS THROUGH 24" FANS. EXTERNAL RELAYS ARE RECOMMENDED FOR ALL FANS.
2. POWER SUPPLY VOLTAGE MUST MATCH VOLTAGE OF RELAY COIL IN 3 PHASE MOTOR STARTER.
3. INSTALLATION OF A GOOD QUALITY ALARM SYSTEM (BY OTHERS) IS STRONGLY ADVISED TO WARN OF POWER FAILURES AND HIGH/LOW TEMPERATURES.
4. COMPUTER EQUIPMENT AND SENSORS MUST NOT BE PRESSURE WASHED. SENSORS MUST BE REMOVED OR PROTECTED FROM HIGH PRESSURE WASHING. FAILURE TO DO SO MAY RESULT IN EQUIPMENT FAILURE AND MAY NOT BE COVERED UNDER WARRANTY.
5. PROVIDE SURGE PROTECTION (TO INCLUDE PROTECTION FROM LIGHTNING) FROM POWER SUPPLY TO CONTROL. CONSULT A CERTIFIED ELECTRICIAN FOR SPECIFIC RECOMMENDATIONS.
6. POWER SUPPLY = POWER INPUT, POWER OUT = POWER OUTPUT.
7. INFORMATION IN PARENTHESIS () REFERS TO 120 VAC OPERATION.
8. REFER TO STAGE 5 FOR TYPICAL THERMOSTAT SAFETY OVERRIDE WIRING. THE SAFETY OVERRIDE THERMOSTAT MAY BE PLACED ON ANY STAGE.
9. IN ORDER FOR VARIABLE SPEED FANS TO RUN CORRECTLY, LEGS OF POWER FOR CONTROL AND LEGS OF POWER FOR STAGE 1 AND STAGE 2 MUST BE SAME PHASE.
10. L1 AND L2 ARE SHOWN AS GRAPHICAL REPRESENTATION ONLY. 3 PHASE LINE BALANCING OF SINGLE PHASE LOADS MUST BE PERFORMED BY A CERTIFIED ELECTRICIAN.

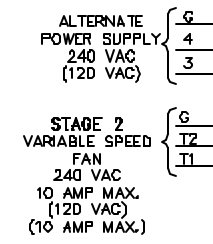
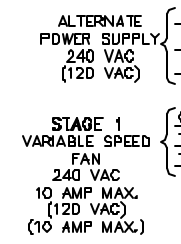
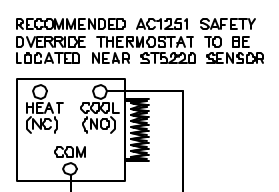
ST5220 - INTERNAL DIP SWITCHES



240 VAC MAX. (120 VAC) CONTROL POWER SUPPLY SEE NOTE #8

120 VAC RELAY COIL POWER SUPPLY

240 VAC MAX. (120 VAC) CONTROL POWER SUPPLY FOR STAGES 1 AND 2 SEE NOTE #8

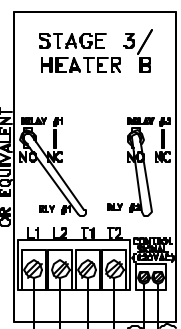
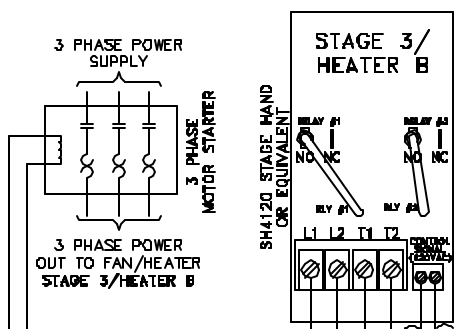
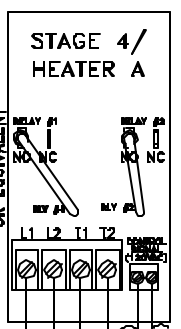


RECOMMENDED SU2000-1

RECOMMENDED SU2000-1

REFER TO THE HEATERS INSTALLATION MANUAL FOR PROPER WIRING CONNECTION.

240 VAC MAX. (120 VAC) POWER SUPPLY FOR HEATER/FAN
 240 VAC MAX. (120 VAC) POWER OUT TO FAN STAGE 4/HEATER A SEE NOTE #10



JUG	01-16-D1	REVISED AND UPDATED 11/80
BY	DATE	DESCRIPTION
		REVISIONS



ST5220 AEROSPEED 2.2 WIRING DIAGRAM - THREE PHASE POWER

DATE	01-12-99	CHECKED BY	RLD	REP.	-
SCALE	NTS	DRAWN BY	DBB	JOB NO.	1455

Aerotech, Inc. 4215 Legan Drive, Mason, MI 48854-1034 USA
 Toll-free: 800-237-2376 • Local: 517-676-7070 • Fax: 517-676-7078

This plan is the exclusive property of Aerotech, Inc. and is authorized for use by Aerotech representatives and customers only. ©Copyright 2001, Aerotech, Inc.
 DRAWING NO. WC-98-341B