

# Munters Wall Inlet (MWI)

## Air Inlets

Through its direct correlation with animal health, ideal climate is a critical element in maximising yields, and minimising losses in animal husbandry. Ideal climate is primarily achieved through controlled fresh air entry and optimal air temperature.

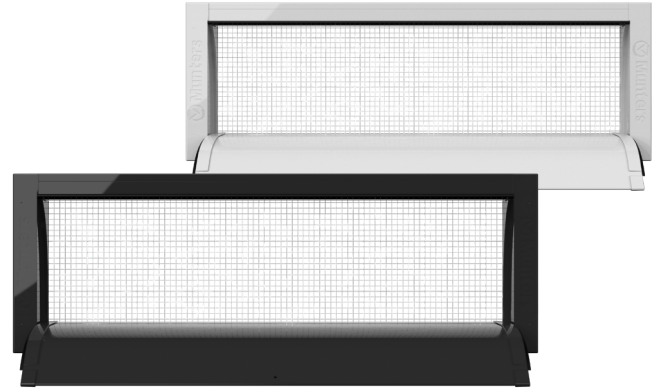
### Benefits

- Ensures an optimal flow of fresh air into the house, without exposing livestock to drafts
- Quick user-friendly assembly without added parts
- Smart design and smooth surface finish ensure maximum hygiene
- Modular design ensures a perfect match between the size of inlets, house design and farmer needs
- Recessed curved door channels the air jet along the ceiling and avoids air escape out the sides
- Suitable for quick high pressure washing
- Top quality durable PVC and PP materials, UV stabilized
- Air sealing gaskets at the top and sides to avoid air leakage in closed position

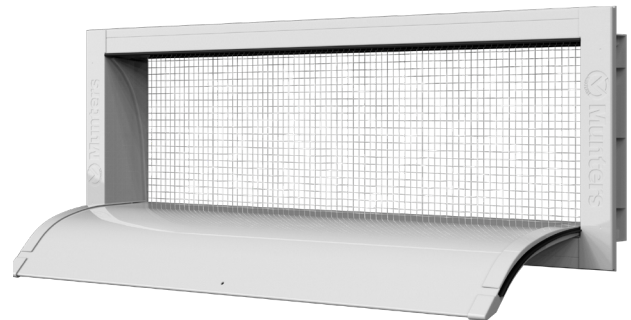
Munters Wall Inlet (MWI) brings fresh air into the house without exposing your animals to cold air drafts. The geometrical shape of MWI has been engineered to channel incoming fresh air along the ceiling, mixing it with the already present indoor air before it reaches the animals.

MWI has been designed to perfectly fit house walls in buildings of any size, thanks to three available widths, and two heights.

The framing system and curved door are manufactured from a combination of UV resistant PVC and PP materials offering maximum durability. MWI can be cleaned with a high pressure washer. For bio-security reasons, an integrated galvanized metal guard is provided, preventing unwanted entry into the house.



MWI front view



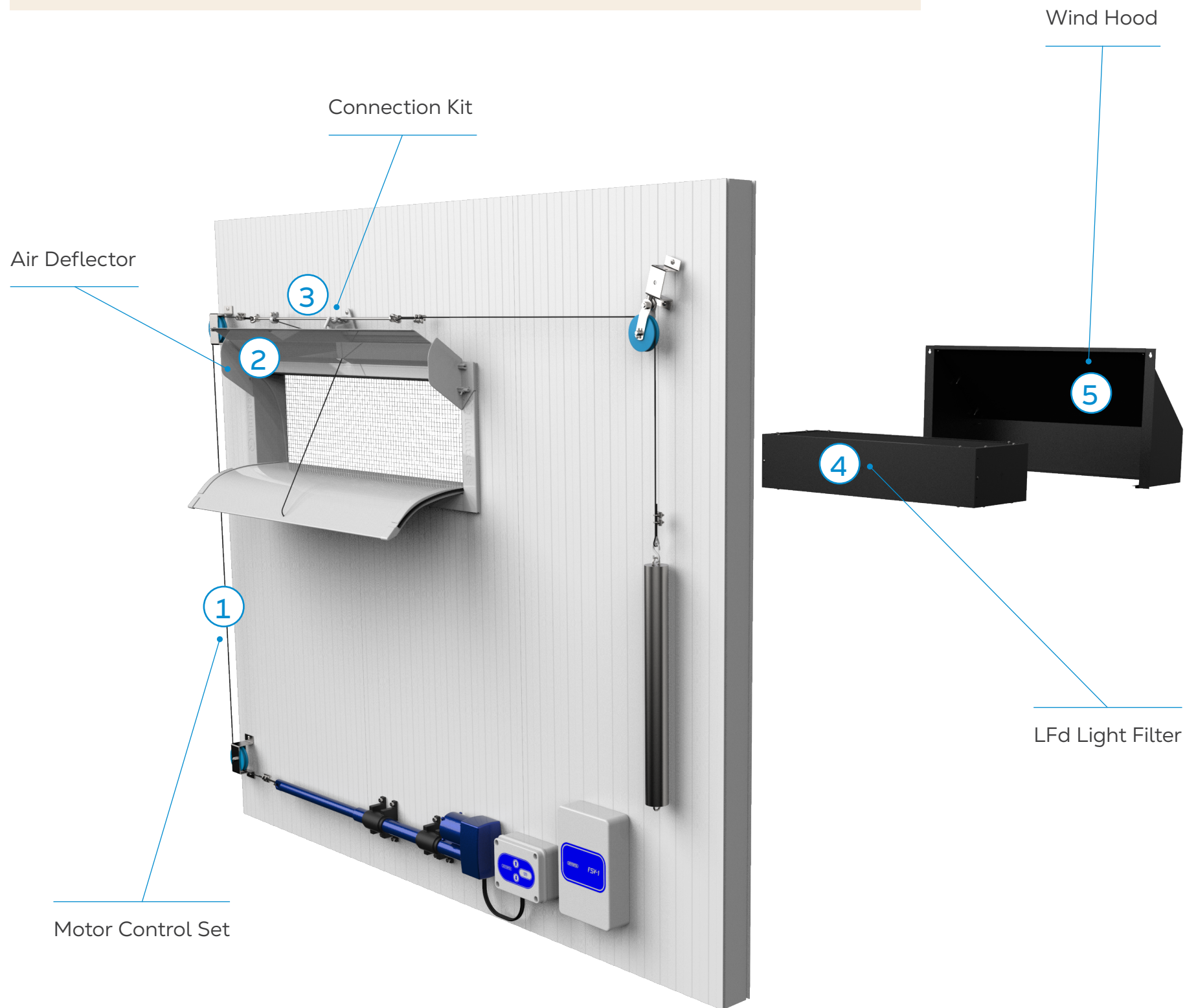
MWI side view

# Munters Wall Inlet (MWI)

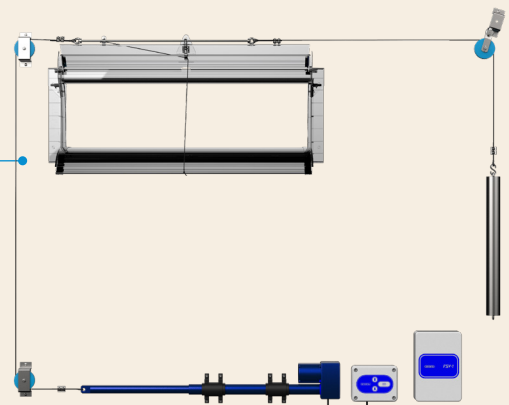
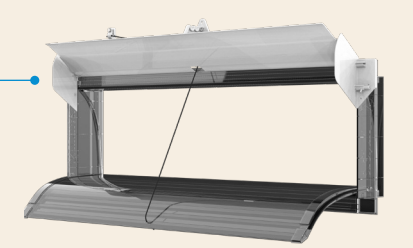
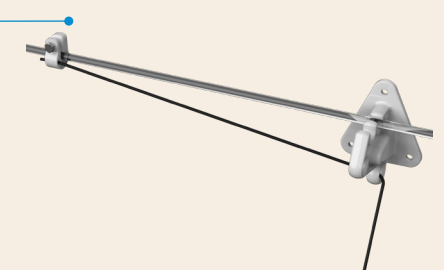
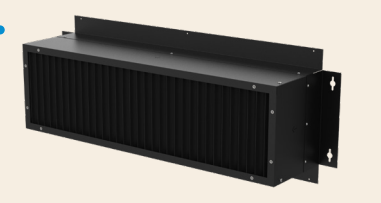
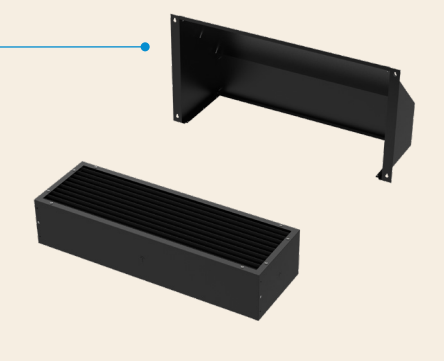
## Air Inlets

Healthy animals make profitable farms.

Ventilation and comfortable climate conditions are a critical factor in animal welfare. Fresh air systems provide air exchange and air distribution are the main way to achieve optimal ventilation and indoor climate. Munters Wall Inlet (MWI) provides state-of-the-art air intake.



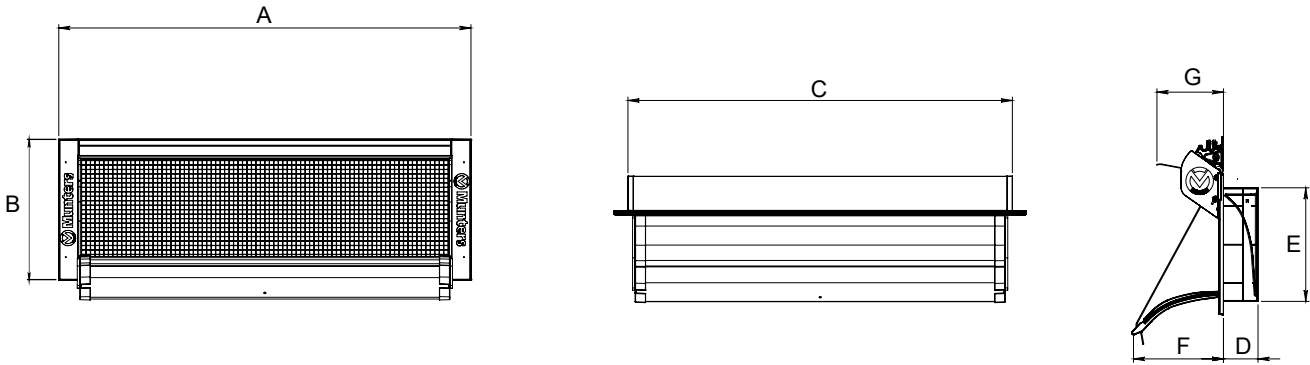
## Available accessories

- 1 Motor Control Set**  
The Motor Control Set allows the optimal regulation of the air inlet system and includes linear actuator LR3000, motor control box SLRK, galvanized pull rods  $\varnothing$  8 mm, universal pulleys and weight.
- 2 Air Deflector**  
In houses with roofs that have exposed beams, frames, or other obstructions crossing the path of the airflow, the Air Deflector achieves correct air distribution.
- 3 Connection Kit**  
The Connection Kit establishes the connection between the pull rod and fresh air inlet. The kit includes wall guide, cord and clamps for 8 mm pull rod. If used, the Connection Kit must be installed on all fresh air inlets in the house.
- 4 LFd Light Filter**  
The LFd, installed as a wall-mounted cassette, ensures the maximum light dimming effect combined with optimal aerodynamics. Light reduction factor 2.000.000 : 1.
- 5 Wind Hood (canopy)**  
The Wind Hood is designed to protect the farm against rain/snow, and a certain amount of wind, as well as providing a light-dimming effect. The wind hood can be equipped with an additional light filter, ensuring maximum light dimming effect combined with optimal aerodynamics.

# Munters Wall Inlet (MWI)

## Air Inlets

### Dimensions



|          | A       | B      | C       | D      | E      | F      | G <sup>1</sup> |
|----------|---------|--------|---------|--------|--------|--------|----------------|
| MWI 4413 | 1198 mm | 410 mm | 1118 mm | 100 mm | 330 mm | 268 mm | 194 mm         |
| MWI 4408 | 1198 mm | 289 mm | 1118 mm | 100 mm | 210 mm | 156 mm | 194 mm         |
| MWI 4113 | 1122 mm | 410 mm | 1041 mm | 100 mm | 330 mm | 268 mm | 194 mm         |
| MWI 4108 | 1122 mm | 289 mm | 1041 mm | 100 mm | 210 mm | 156 mm | 194 mm         |
| MWI 3413 | 944 mm  | 410 mm | 864 mm  | 100 mm | 330 mm | 268 mm | 194 mm         |
| MWI 3408 | 944 mm  | 289 mm | 864 mm  | 100 mm | 210 mm | 156 mm | 194 mm         |

<sup>1</sup>Air deflector: optional accessory

### Technical specifications

|                  |                   | MWI 4413 | MWI 4408 | MWI 4113 | MWI 4108 | MWI 3413 | MWI 3408 |
|------------------|-------------------|----------|----------|----------|----------|----------|----------|
| Airflow at 10 Pa | m <sup>3</sup> /h | 3,597    | 2,277    | 3,316    | 2,175    | 2,742    | 1,770    |
| Airflow at 20 Pa | m <sup>3</sup> /h | 5,026    | 3,158    | 4,716    | 3,084    | 3,830    | 2,491    |
| Airflow at 30 Pa | m <sup>3</sup> /h | 6,155    | 3,867    | 5,721    | 3,724    | 4,671    | 3,082    |
| Pull force       | N                 | 40       | 20       | 30       | 20       | 20       | 20       |
| Stroke way       | mm                | 470      | 290      | 470      | 290      | 470      | 290      |

### Load capacity

|  |       | MWI 4413    | MWI 4408    | MWI 4113    | MWI 4108    | MWI 3413   | MWI 3408   |
|--|-------|-------------|-------------|-------------|-------------|------------|------------|
| 20' container                          | units | 900         | 900         | 900         | 900         | 900        | 900        |
| 40' HC container                       | units | 2160        | 2376        | 2160        | 2376        | 2160       | 2376       |
| Box size                               | cm    | 112x38x37.5 | 112x30x37.5 | 104x38x37.5 | 104x30x37.5 | 88x38x37.5 | 88x30x37.5 |
| Box weight                             | kg    | 44          | 37          | 41          | 35          | 36         | 31         |
| Pallet size                            | cm    | 114x118x240 | 114x98x240  | 114x118x240 | 114x98x240  | 90x118x240 | 90x98x240  |
| Pallet weight                          | kg    | 800         | 680         | 750         | 640         | 660        | 570        |
| Air deflector <sup>1</sup><br>box size | cm    | 112x38x12   | 112x38x12   | 104x38x12   | 104x38x12   | 88x38x12   | 88x38x12   |

<sup>1</sup>Air deflector: optional accessory

Find your nearest Munters office at [www.munters.com](http://www.munters.com)

Munters reserves the right to make alterations to specifications, quantities, etc., for production or other reasons, subsequent to publication. © Munters AB, 2024